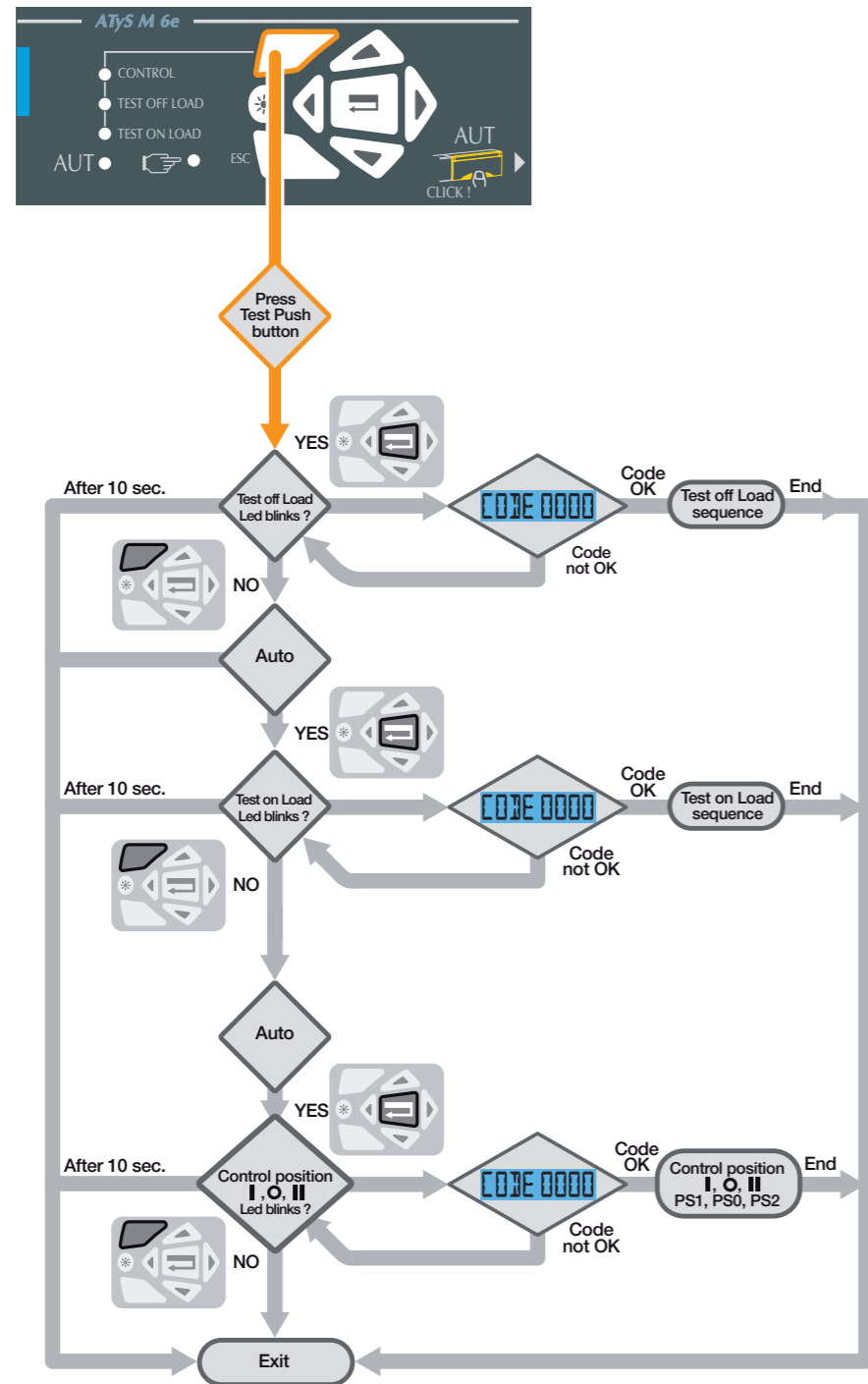


# 10 Test Mode



# 11 Instruction Manual Reference

For detailed instruction and installation guide, please refer to:



NMO 535819-A

# Automatic Transfer Switch ATyS M 6e Quick start

## 1 Safety Instruction



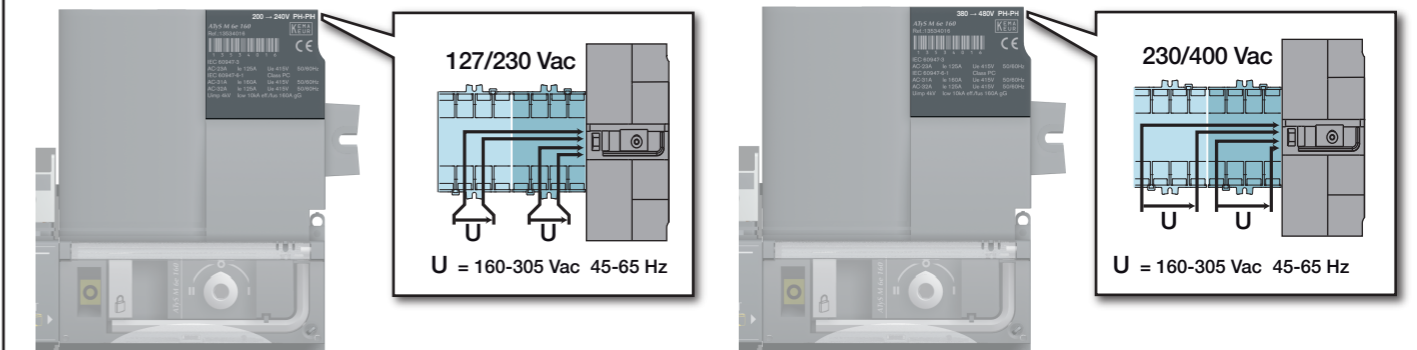
- This system must always be installed and commissioned by competent and qualified personnel.
- The maintenance operations must be carried out exclusively by authorised and appropriately trained personnel.
- For more information see the Instruction Manual.

## 2 Environmental Requirements

- Hygrometry** : 80% humidity without condensation at 55° C  
95% humidity with condensation at 40° C
- Temperature** : -10 + 40°C without de-rating  
-20 + 70°C with de-rating
- Storage** : temperature -20 to +70°C  
period : 1 year max
- Altitude** : max 2 000 m without de-rating
- Ingress Protection** : IP21
- Mass** : 5 kg

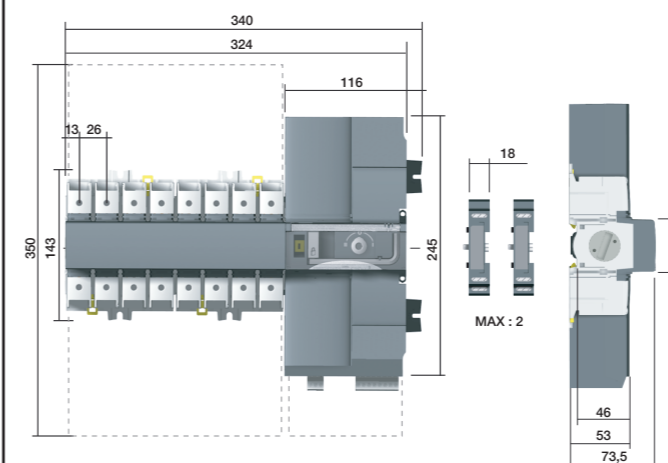
## 3 Preliminary Checking

- Check product characteristics Rating & label

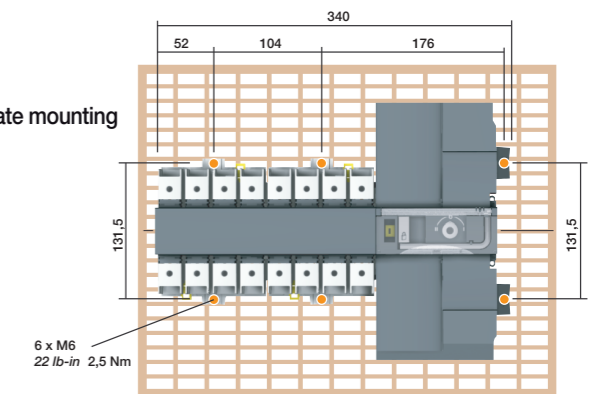


## 4 Mounting

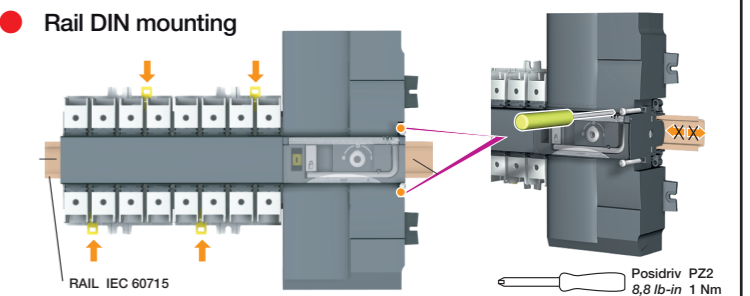
- Dimensions



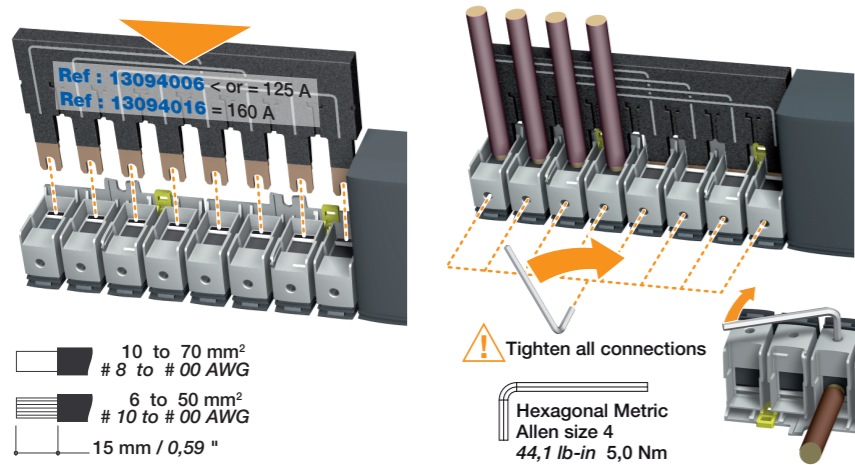
- Black plate mounting



- Rail DIN mounting



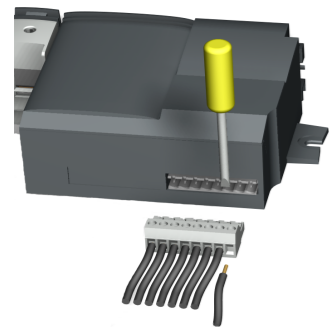
## 5 Power Connections Wiring



Before connecting, please ensure that :

- Switch in manual mode
- Switch in 0 position

## 6 Control Terminals Connections Wiring

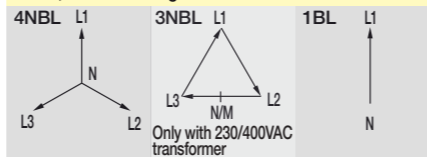


Type	Description	Characteristics
Input	207 Input common terminal	DO NOT CONNECT TO ANY POWER SUPPLY
	208 I <sub>1</sub> : Configurable Input 1	
	209 I <sub>2</sub> : Configurable Input 2	
	210 I <sub>3</sub> : Configurable Input 3	
Output	43 / 44 O <sub>1</sub> : Programmable output 1	Resistive load Max. switched power : 60 W or 250 VA Max. switched current : 5A Max. switched voltage : 30 Vdc or 250 Vac
	53 / 54 O <sub>2</sub> : Programmable output 2	
	64 / 64 O <sub>3</sub> : Programmable output 3	
	73 / 74 G : Generator Start/Stop signal	
COM	RJ45 Remote interface ATyS D10/D20	Max. 3m
	RS485 JBUS/MODBUS Connection	(only on products with communication integrated)
RESET	Resets software	

## 7 First Setting

Parameters	Setting range	Default value
<b>NETWORK</b> Network configuration *	3NBL / 4NBL / 41NBL / 1BL (230/400V version) 4NBL / 3NBL / 2NBL / 2BL / 42NBL (127/230V version)	4NBL
<b>NEUTRAL</b> Neutral position on the switch	AUTO LEFT RIGHT	AUTO
<b>NOM. VOLT.</b> Phase - Phase Nominal voltage	From 180 to 480 VAC	400VAC (230/400V version) 230VAC (127/230V version)
<b>NOM. FREQ.</b> Nominal Frequency	50 or 60Hz	50 Hz
<b>APP</b> Type of application M - G : Network - Genset M - M : Network - Network	M - G M - M	M - G
<b>RETRANS</b> Retransfer inhibit feature, press on Validation button required to allow retransfer from Gen to Main	YES or NO	NO
<b>TIMERS</b>	Setting range	Default value
1FT Loss of source 1 Validation timer.	0 to 60 sec	3 sec
1RT Source 1 return validation timer.	0 to 3600 sec	180 sec
2FT Loss of source 2 Validation timer.	0 to 60 sec	3 sec
2RT Source 2 return validation timer.	0 to 60 sec	5 sec
2AT Standby network stability validation before transfer	0 to 60 sec	5 sec
2CT Run on timer	0 to 600 sec	180 sec
ODT Dead band timer	0 to 20 sec	3 sec

\* The wiring must be adapted to the network configuration. Below, the main configurations.



**Programming Access :**  
Default password : 1000

**Navigation**

Press for 3 seconds

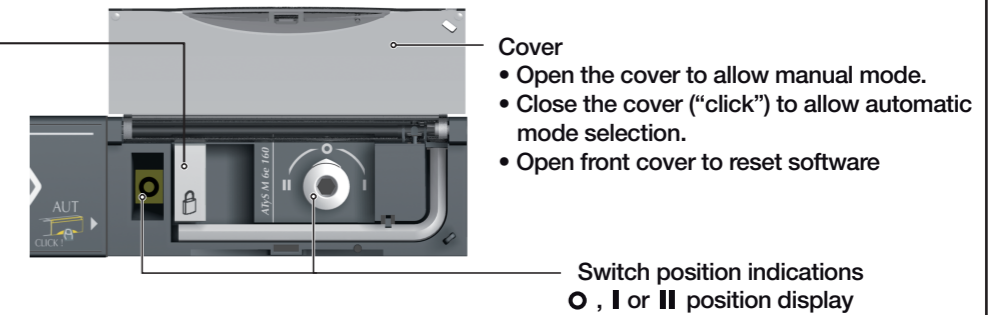
Press once to display 1

Validate

**Programming Exit :**  
Press for 3 seconds

## 8 Operating Modes

- Padlock facility (1 x 8mm max)
- Manual operation
- Manual operation only possible in Manual mode when not padlocked
- Insert Allen key (5.0mm provided) to manually operate the switch.



Mode	Manual operation	Padlocking
AUT Cover closed Click	Automatic Cover open	Padlocking in 0 position See Instruction Manual for other positions
	Hexagonal Metric Allen size 5 Max 88,2 lb-in 10 Nm	4 mm min 8 mm max 3/16" min 5/16" max

## 9 Panel Display

**Source availability**

- 2 green LEDs to indicate if source 1 or Source 2 are available (voltage and frequency measurement)
- LED is on = source available
- LED is off = source missing

**LCD**

- Larger LCD to display information

**Push button**

- Lamps test button
- Validation button
- Test mode button

### TESTS AND CONTROL MODE

- CONTROL** 1 yellow LED = control position I, O, II
- TEST OFF LOAD** 1 yellow LED = This test starts and stops remotely the genset without load transfer
- TEST ON LOAD** 1 yellow LED = This test simulates a loss of priority source situation, the sequence generates load transfer.

**Switch state**

- 2 green LEDs to indicate if the switch is opened or closed
- LED is on = switch is closed
- LED is off = switch is opened
- 1 Yellow led to indicate if both switches are in 0 position
- LED is on = both switches opened
- LED is off = Source 1 or Source 2 switch closed

**Power LED**

- 1 green LED
- Always on = Power OK
- Always off = Power off or software error if another led is on and LCD is OK

**Error LED**

- 1 red LED to indicate a fault
- LED is on = switch error
- Action from software not confirmed by an auxiliary contact. Open the front cover to reset.

**AUTO / MANU MODE** AUT / I

- 1 green LED on = AUT (Automatic Mode)
- blinking = Wait Retranfer validation
- 1 yellow LED on = (Manual Mode)

