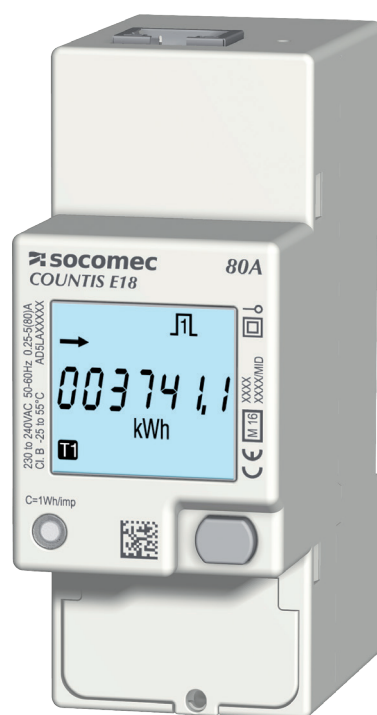


# COUNTIS **E17/E18**

Single-phase energy meter  
Direct - 80 A Ethernet



COUNTIS E17



COUNTIS E18 - MID



<b>1. DOCUMENTATION</b>	<b>3</b>
<b>2. HAZARDS AND WARNINGS</b>	<b>4</b>
2.1. Risk of electrocution, burns or explosion	4
2.2. Risk of damaging the unit	4
2.3. Responsibility	4
<b>3. PRELIMINARY OPERATIONS</b>	<b>5</b>
<b>4. INTRODUCTION</b>	<b>6</b>
4.1. Introducing the COUNTIS E17 / E18	6
4.2. Functions	6
4.3. Front panels	6
4.4. LCD display	7
4.5. Dimensions	7
4.6. Electrical readings	8
4.6.1. Measurements	8
4.6.2. Energy balance; definition	8
<b>5. INSTALLATION</b>	<b>9</b>
5.1. Recommendations and safety	9
5.2. DIN rail mounted	9
<b>6. CONNECTION</b>	<b>10</b>
6.1. Connecting the COUNTIS E17/E18	10
6.2. Connection to the electrical network and to the loads	10
<b>7. MID COMPLIANCE</b>	<b>11</b>
<b>8. COMMUNICATION</b>	<b>12</b>
8.1. General information	12
8.2. Communication structure	12
8.3. Communication tables	12
<b>9. CONFIGURATION</b>	<b>13</b>
9.1. Onscreen configuration	13
9.1.1. View all of the menu "SETUP"	14
9.1.2. Detailed view of menu "SETUP"	15
9.1.3. Example: setting the communication address	16
<b>10. USE</b>	<b>17</b>
10.1. Detailed view of the tariff menu, "Tar."	18
10.2. Detailed view of the total menu, "tot"	19
10.3. Detailed view of the menu for partial and realtime readings, "P. rt"	20
10.3.1. Starting up the partial energy meter	21
10.3.2. Stopping the partial energy meter	21
10.3.3. Resetting the partial energy meter to zero	21
10.4. Detailed view of the menu "info"	22
<b>11. DIAGNOSTICS MESSAGES</b>	<b>23</b>
<b>12. ASSISTANCE</b>	<b>23</b>
<b>13. CHARACTERISTICS</b>	<b>24</b>
<b>14. GLOSSARY OF ABBREVIATIONS</b>	<b>27</b>

# 1. DOCUMENTATION

All documentation on the COUNTIS E17/E18 is available online at:  
[www.socomec.com/en/countis-e1x](http://www.socomec.com/en/countis-e1x)



## 2. HAZARDS AND WARNINGS

The term "device" used in the paragraphs below refers to the COUNTIS E17/E18.

The assembly, use, servicing and maintenance of this equipment must only be carried out by trained, qualified professionals.

SOCOMEK shall not be held responsible for failure to comply with the instructions in this manual.

### 2.1. Risk of electrocution, burns or explosion

- Only duly authorised and qualified personnel may work or install/uninstall the device.
- The instructions are valid together with the specific instructions for the device.
- The devices are designed only for their intended purpose as set out in the instructions.
- Only accessories authorised or recommended by SOCOMEK may be used in association with the devices.
- Before proceeding with installation, maintenance, cleaning, disassembly, connection, or maintenance work, the device and system must be cut off from the mains to avoid electrocution and damaging the system and device.
- These devices are not designed to be repaired by the user.
- For any questions related to the disposal of the device, please contact SOCOMEK.

**Failure to comply with the instructions of the device and this safety information can cause bodily injury, electric shock, burns, death or damage to property.**

### 2.2. Risk of damaging the unit

To ensure that the unit operates correctly, make sure that:

- The unit is correctly installed.
- There is a maximum voltage at the voltage input terminals of 288 VAC phase-neutral
- The network frequency indicated on the device is observed: 50 or 60 Hz.
- There is a maximum current of 80 A at the current input terminals (I1).

**Failure to respect these precautions could cause damage to the unit.**

### 2.3. Responsibility

- Assembly, connection and use must be carried out in accordance with the installation standards currently in force.
- The unit must be installed in accordance with the rules given in this manual.
- Failure to observe the rules for installing this unit may compromise the device's intrinsic protection.
- The unit must be positioned within an installation which complies with the standards currently in force.
- Any cable which needs to be replaced may only be replaced with a cable having the correct rating.

### 3. PRELIMINARY OPERATIONS

To ensure the safety of staff and the equipment, it is vital to read and absorb the contents of these instructions thoroughly before commissioning.

Check the following points as soon as you receive the package containing the unit:

- The packaging is in good condition
- The unit has not been damaged during transportation
- The device reference number conforms to your order
- The package includes:
  - 1 device
  - 1 ferrite core
  - 1 sealing kit (for COUNTIS E18)
  - 1 Quick Start guide

# 4. INTRODUCTION

## 4.1. Introducing the COUNTIS E17 / E18

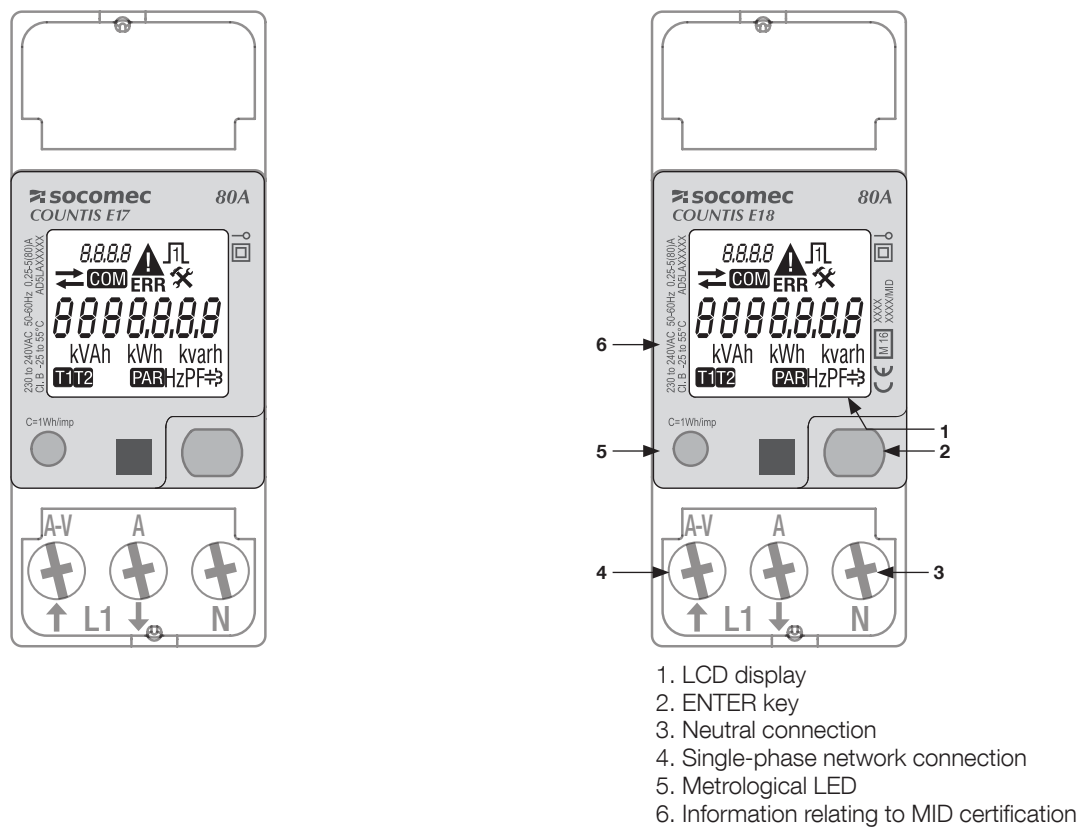
The COUNTIS E17 and E18 are modular active and reactive electrical energy meters that display consumed energy. They are designed for single-phase networks and allow a direct connection of up to 80 A. They are equipped with an Ethernet communication bus.

## 4.2. Functions

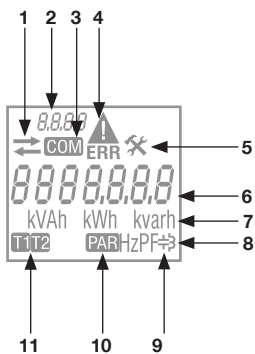
- Measures and displays total and partial energy
- Dual tariff management: T1 / T2
- Electrical parameter measurements: I, U, V, f
- Power, power factor
- TCP Modbus communication
- MID version (according to reference)

Description	Reference
COUNTIS E17	4850 3047
COUNTIS E18 - Version MID	4850 3048

## 4.3. Front panels



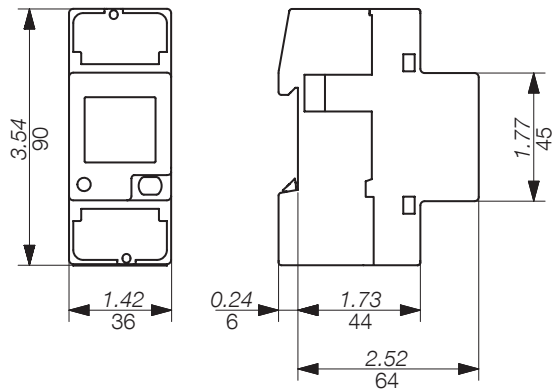
## 4.4. LCD display



1. Imported (→) or exported (←) energy or power
2. Identification of current menu
3. Active communication
4. Device malfunction. Replace the device
5. Setup menu
6. Main zone
7. Unit of measure
8. Inductive value
9. Capacitive value
10. Partial meters. Flashing = partial meter has stopped
11. Tariff display

## 4.5. Dimensions

Dimensions: in/mm



## 4.6. Electrical readings

### 4.6.1. Measurements

Settings vary by model.

<b>Realtime values</b>	<b>Symbol</b>	<b>Unit of measure</b>	<b>LCD display</b>	<b>Via communication</b>
Neutral voltage	V	V	●	●
Current	I	A	●	●
Power factor	PF		●	●
Apparent power	S	kVA		●
Active power	P	kW	●	●
Reactive power	Q	kvar	●	●
Frequency	f	Hz	●	●
Direction of current	↺		●	
<b>Logged data</b>				
Total active, reactive and apparent energy	Ea, Er, Eap	kWh, kvarh, kVAh	●	●
Total reactive, inductive and capacitive energy	Er	kvarh	●	●
Total active and reactive energy for each tariff (T1/T2)	Ea, Er	kWh, kvarh	●	●
Total apparent energy for each tariff (T1/T2)	Eap	kVAh		●
Total reactive, inductive and capacitive energy for each tariff (T1/T2)	Er	kvarh		●
Active, partial energy for each tariff (T1/T2)	Ea	kWh	●	●
Partial active and reactive energy	Ea, Er	kWh, kvarh	●	●
Partial apparent energy	Eap	kVAh		●
Energy balance	Σ	kWh, kvarh		●
<b>Miscellaneous</b>				
Current tariff	T	1/2	●	●
Partial meters	BY	START/STOP	●	

### 4.6.2. Energy balance; definition

	<b>Formula</b>
kWh	(+kWh T1) – (-kWh T1) + (+kWh T2) – (-kWh T2)
kvarh	(+kvarh T1) – (-kvarh T1) + (+kvarh T2) – (-kvarh T2)



## 5. INSTALLATION

The paragraphs below describe how to install the device.

### 5.1. Recommendations and safety

Refer to the safety instructions (section "2. Hazards and warnings", page 4)

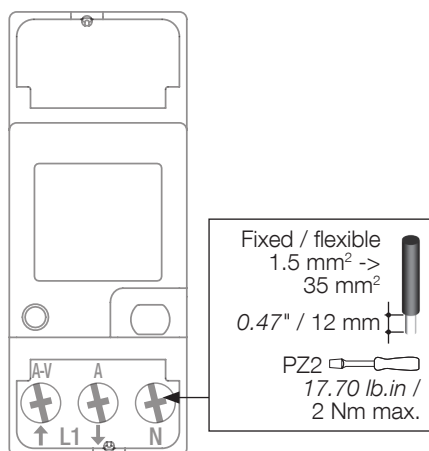
- Keep away from electromagnetic interference generator systems,
- Avoid vibrations with accelerations greater than 1 g for frequencies lower than 60 Hz.

### 5.2. DIN rail mounted

The COUNTIS E17/E18 can be mounted on a 35-mm DIN rail (EN 60715TM35). They must be used inside electrical cabinets.

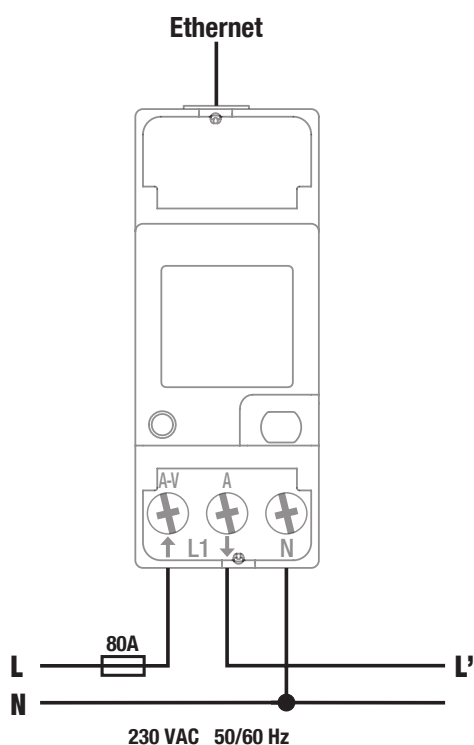
## 6. CONNECTION

### 6.1. Connecting the COUNTIS E17/E18



### 6.2. Connection to the electrical network and to the loads

The COUNTIS E17/E18 are intended for single-phase networks with neutral.



#### Ethernet

RJ45. The Ethernet cable must pass twice through the ferrite core, positioned at least 5 cm away from the device.

#### Price list

Tariff switch via communication

#### Network

L1 A-V: Phase input

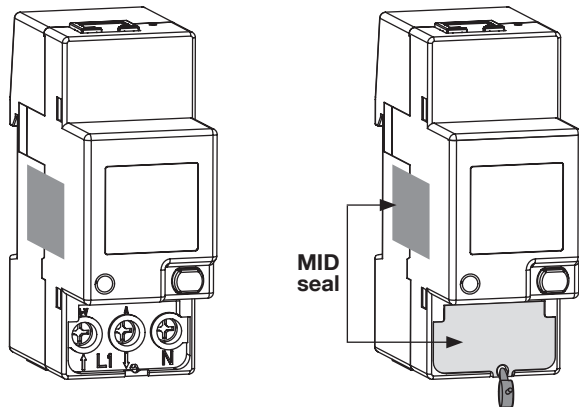
L': A: Phase output

N: Neutral connection

## 7. MID COMPLIANCE

The following points must be taken into consideration to ensure that the device is used in compliance with directive MID 2014/32/EU:

- **Type of network**  
COUNTIS E18 meters comply with the MID directive for connection to networks: 1P+N (see "6.2. Connection to the electrical network and to the loads", page 10)
- **Fitting terminal covers**  
After connecting the device, ensure that the terminal covers are fitted properly and secured by the plastic seals provided with the device.
- **Communication**  
The information provided via the TCP Modbus COM is transmitted for information only and has no legal value.
- **MID Declaration of Conformity**  
The MID Declaration of Conformity is available on the website: [www.socomec.com/en/countis-e1x](http://www.socomec.com/en/countis-e1x)



## 8. COMMUNICATION

### 8.1. General information

The Modbus communication available on the COUNTIS E17/E18 communicates via an Ethernet link which is used to operate devices from a PC or an API.

### 8.2. Communication structure

The device communicates via a Modbus protocol which involves a dialogue in accordance with a master/slave structure. Communication is via TCP (Transmission Control Protocol) through the Ethernet communication port.

The default IP address is:

IP address: 192.168.0.4

Subnet Mask: 255.255.255.000

Gateway: 192.168.0.1

Modbus address: 5

A web server lets you access the measurement data.

The broadcast communication is available for the log that stores the tariff.

### 8.3. Communication tables

The communication tables and relevant notes are available online on the COUNTIS E17/E18 documentation page at:

[www.socomec.com/en/countis-e1x](http://www.socomec.com/en/countis-e1x)




## 9. CONFIGURATION

The devices can be configured directly from the COUNTIS E17/E18 screen in programming mode or via the communication link. The paragraphs below describe configuring using the screen.


### 9.1. Onscreen configuration


From the screen, go to programming mode to change your communication settings. How to browse through the programming mode is described in the following stages:

Function	Where	Buttons	Press
Switch menus	Every page except SETUP menu		Double speed (x2 < 0.5 sec)
Switch pages within a menu	Every page within a menu		Realtime
Go to SETUP menu	Menu page SETUP		> 3 sec
Change a value/digit	SETUP pages		realtime
Confirm a value/digit	SETUP pages		Double speed (x2 < 0.5 sec)
Exit SETUP menu	SETUP Menu		> 3 sec
Start/stop the displayed partial meter	Partial meter menu		> 3 sec
Reset the displayed partial meter to zero	Partial meter menu		> 3 sec
Display test	Every page with the exception of SETUP and partial meters		> 10 sec

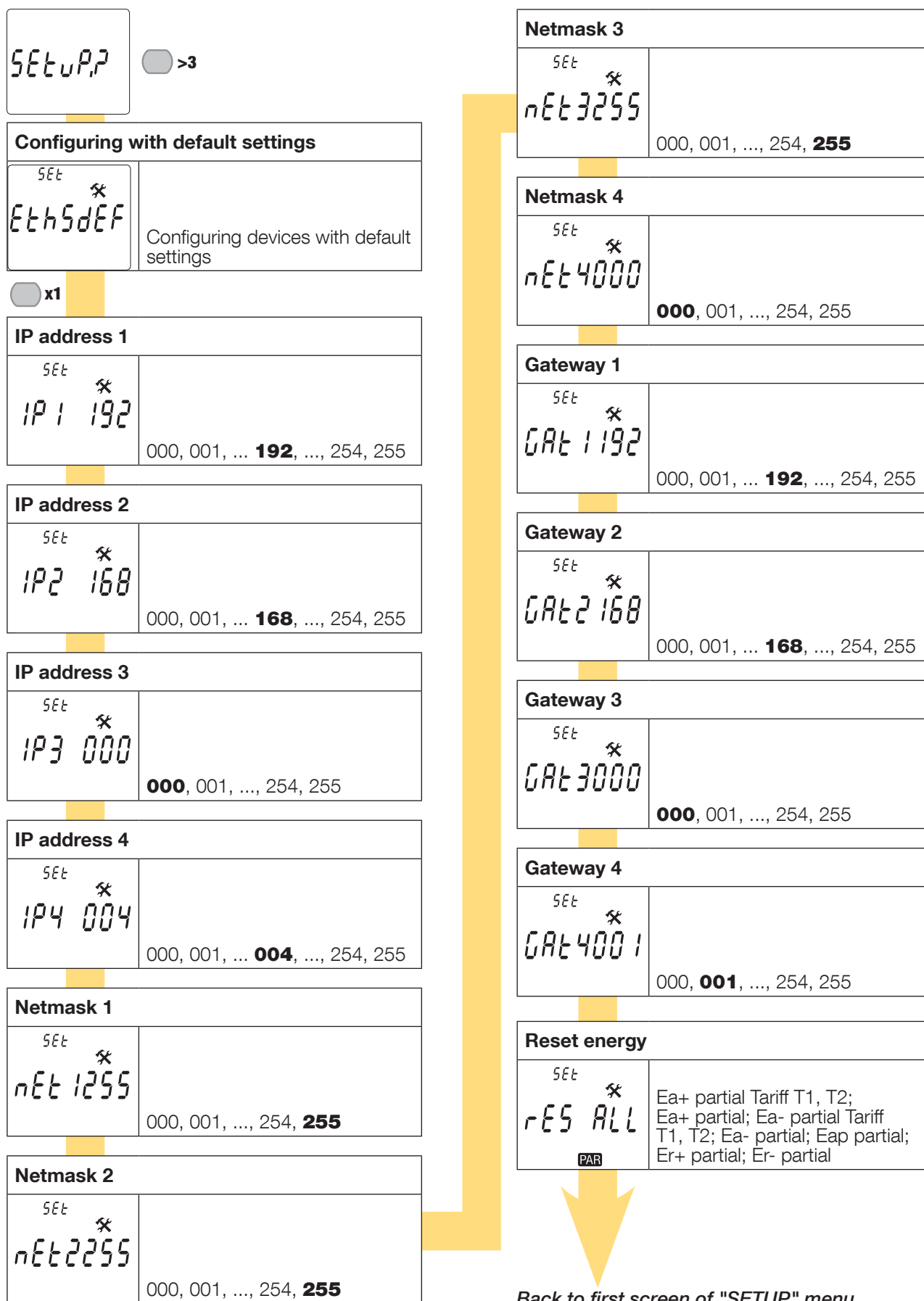
### 9.1.1. View all of the menu "SETUP"

In the SETUP menu, press " " for 3 seconds to put the device into programming mode.

Press " " to go to the different screens:

<div>SETUP,2  &gt;3s</div>	
	IP address 1
	IP address 2
	IP address 3
	IP address 4
	Netmask 1
	Netmask 2
	Netmask 3
	Netmask 4
	Gateway 1
	Gateway 2
	Gateway 3
	Gateway 4
	Reset partial energy to zero:
	Ea+ partial (kWh) Tariff T1, T2
	Ea+ partial (kWh)
	Ea- partial (kWh) Tariff T1, T2
	Ea- partial (kWh)
	Eap partial (kVAh)
	Er+ partial (kVarh)
	Er- partial (kVarh)
<i>Back to first screen of "SETUP" menu</i>	

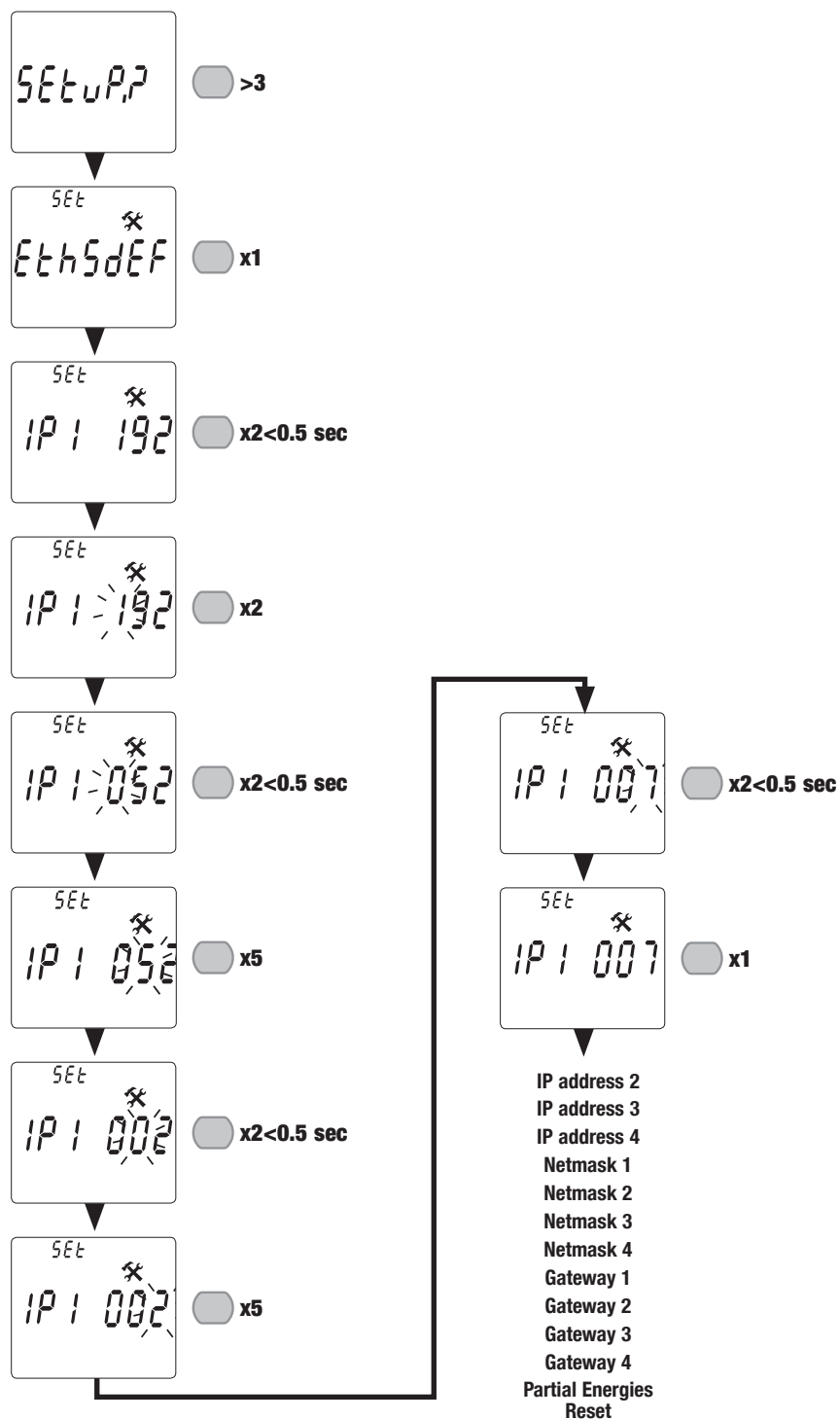
## 9.1.2. Detailed view of menu "SETUP"



### 9.1.3. Example: setting the communication address

In "SETUP" mode (see page 14), go to the "IP address 1" screen

Example: changing the communication address to IP1 007.



**XX** = default value



## 10. USE

Switch menus by pressing "  " twice for at least 0.5 seconds.  
Press "  " to see the electrical readings or menu information.

The menus and related measurements are described in the table below:

Tariff (Tar.)	Total (tot)	Partial and realtime readings (P. rt)	Information (inFo)
<div> <div>Tariff 1 - Imported and exported active energy</div> <hr/> <div>Tariff 1 - Imported and exported reactive energy</div> <hr/> <div>Tariff 2 - Imported and exported active energy</div> <hr/> <div>Tariff 2 - Imported and exported reactive energy</div> <hr/> </div>	<div> <div>Total imported and exported active energy</div> <hr/> <div>Total apparent energy</div> <hr/> <div>Total imported and exported inductive reactive energy</div> <hr/> <div>Total imported and exported capacitive reactive energy</div> <hr/> <div>Total imported and exported reactive energy</div> <hr/> </div>	<div> <div>Partial imported active energy by tariff</div> <hr/> <div>Partial imported active energy</div> <hr/> <div>Partial exported active energy by tariff</div> <hr/> <div>Partial exported active energy</div> <hr/> <div>Partial imported reactive energy</div> <hr/> <div>Active and reactive power</div> <hr/> <div>Voltage</div> <hr/> <div>Current</div> <hr/> <div>Power factor</div> <hr/> <div>Frequency</div> <hr/> </div>	<div> <div>Metrological firmware version</div> <hr/> <div>Non-metrological firmware version</div> <hr/> <div>Checksum of metrological firmware</div> <hr/> <div>Checksum of non-metrological firmware</div> <hr/> <div>Installed communication port</div> <hr/> </div>
Back to first screen of "Tar." menu	Back to first screen of "tot" menu	Back to first screen of "P.rt" menu	Back to first screen of "InFO" menu

10.1. Detailed view of the tariff menu, "Tar."

Imported active energy, tariff 1

$\rightarrow$

$\epsilon R_r$

000062.2

kWh

T1

Exported active energy, tariff 1

$\leftarrow$

$\epsilon R_r$

000062.2

kWh

T1

Imported reactive energy, tariff 1

$\rightarrow$

$\epsilon R_r$

000062.2

kvarh

T1

Exported reactive energy, tariff 1

$\leftarrow$

$\epsilon R_r$

000062.2

kvarh

T1

Imported active energy, tariff 2

$\rightarrow$

$\epsilon R_r$

000062.2

kWh

T2

Exported active energy, tariff 2

$\leftarrow$

$\epsilon R_r$

000062.2

kWh

T2

Imported reactive energy, tariff 2

$\rightarrow$

$\epsilon R_r$

000062.2

kvarh

T2

Exported reactive energy, tariff 2

$\leftarrow$

$\epsilon R_r$

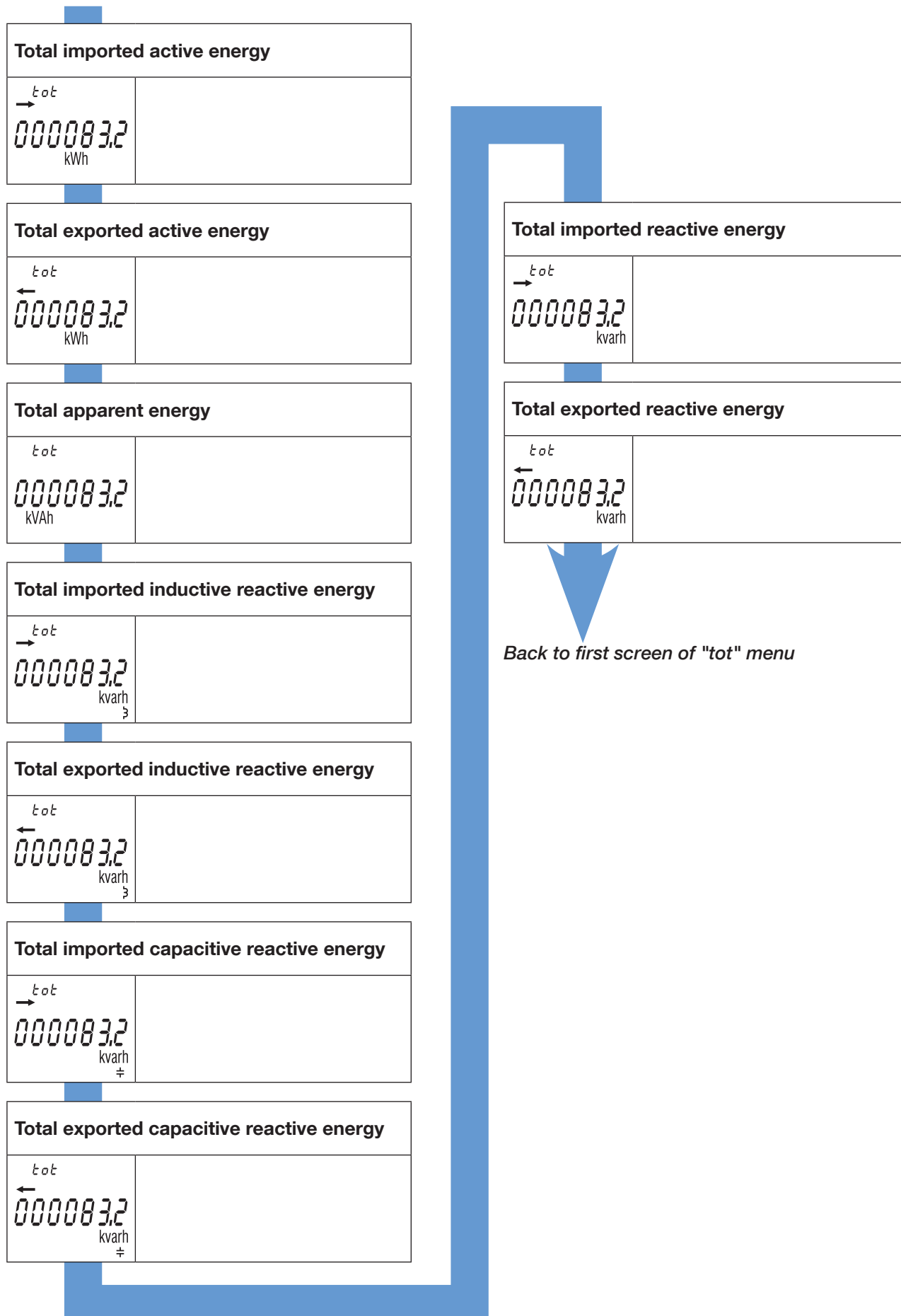
000062.2

kvarh

T2

Back to first screen of "Tar." menu

## 10.2. Detailed view of the total menu, "tot"



10.3. Detailed view of the menu for partial and realtime readings, "P. rt"

Imported partial active energy for tariff T1

P. rt

→

000083.2

kWh

T1PAR

Imported partial active energy for tariff T2

P. rt

→

000083.2

kWh

T2PAR

Partial imported active energy

P. rt

→

000083.2

kWh

PAR

Exported partial active energy for tariff T1

P. rt

←

000083.2

kWh

T1PAR

Exported partial active energy for tariff T2

P. rt

←

000083.2

kWh

T2PAR

Partial exported active energy

P. rt

←

000083.2

kWh

PAR

Partial imported reactive energy

P. rt

→

000083.2

kvarh

PAR

Realtime active power

P. rt

→

08.32

kW

Realtime reactive power

P. rt

→

08.32

kvar

±

Realtime voltage

P. rt

228.2

V

Realtime current

P. rt

00.00

A

Realtime power factor

P. rt

0.000

PF±

Frequency

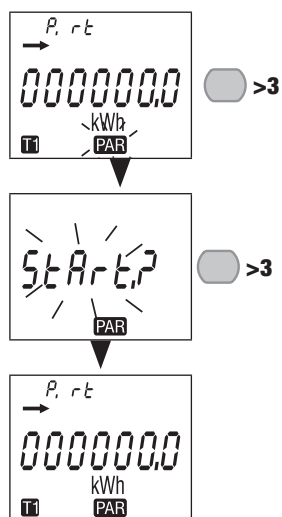
P. rt

50.01

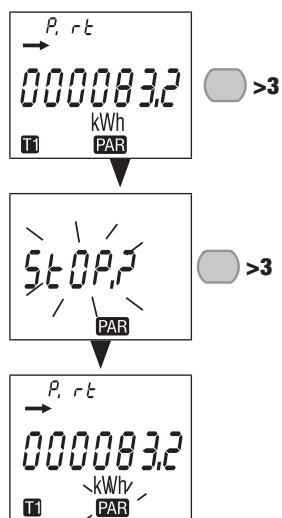
Hz

Back to first screen of "P. rt" menu

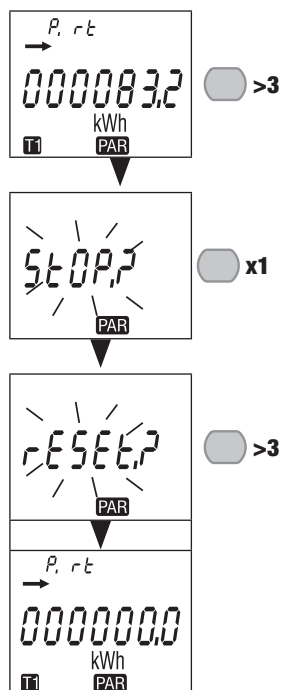
### 10.3.1. Starting up the partial energy meter



### 10.3.2. Stopping the partial energy meter



### 10.3.3. Resetting the partial energy meter to zero



## 10.4. Detailed view of the menu "info"

Metrological firmware version	
Info	
Fr 1 1.22	

Non-metrological firmware version	
Info	
Fr 2 3.00	

Checksum of metrological firmware	
Info	
C5 1C 1b6	

Checksum of non-metrological firmware	
Info	
C52587E	

Installed communication port	
Info	
Eth	



Back to first screen of "info" menu

## 11. DIAGNOSTICS MESSAGES

The following message appears if there are connection or malfunction errors.

### 11.1. Malfunction



- If you see this message, the meter has malfunctioned and must be replaced.

## 12. ASSISTANCE

Causes	Solutions
Device not working	Check the neutral and phase cable connections
Error message	Check the meter is working OK

# 13. CHARACTERISTICS

GENERAL FEATURES	
Compliant with	European EMC Directive No. 2014/30/EU dated 26/02/2014 LV Directive No. 2014/35/EU dated 26/02/2014 Measuring Instrument Directive MID No. 2014/32/EU dated 26/02/2014 EN50470-1/-3 IEC 62053-21/-23
Frequency	45 and 65 Hz
Power supply	Self-supplied
Rated dissipated power (Wmax.)	7.5VA (0.5W)
FEATURES	
Single-phase connectivity	2 wires 230 - 400V
Stores energy readings and settings	In FRAM memory
Identifies display of tariffs	T1 and T2
CURRENT MEASUREMENTS	
Type	Single-phase - direct 80 A
Input consumption	0.5VA max. per phase
Startup current (Ist)	20mA
Minimum current (Imin)	0.25A
Transition current (Itr)	0.5A
Reference current (Iref)	5A
Permanent overload (Imax)	80A
Intermittent overload	30 Imax for 1/2 cycle
OVERLOAD CAPACITY	
DC voltage Un	276 VAC
Realtime voltage Un (1 s)	300 VAC
DC current Imax	80 A
Realtime current Imax	30 Imax for 1/2 cycle
VOLTAGE MEASUREMENTS	
Range of measurement	230-240V $\pm$ 20%
Consumption	7.5VA max
Permanent overload	290V phase-neutral
FREQUENCY MEASUREMENT	
Frequency measurement	45-65 Hz
ENERGY MEASUREMENT	
Active	Yes
Reactive	Yes
Total and partial reading	Yes
MID metering	Bidirectional with single-phase
Resolution	10 Wh, 10 varh
ENERGY ACCURACY	
Active energy Ea+	Class B (EN 50470-3) E18 Class 1 (IEC 62053-21)
Reactive energy Er+	Class 2 (IEC 62053-23)



<b>TARIFF for Ea+</b>	
Tariff management	Yes (via communication)
Number of tariffs managed	2
<b>METROLOGICAL LED (Ea+)</b>	
Pulse value	1000 pulses / kWh
Colour	Red
<b>PULSE OUTPUT</b>	
Type	Opto-isolated - 5 ... 27VDC 27mA according to EN 62053-31
Pulse weight	100 Wh
<b>DISPLAY</b>	
Type	7-digit LCD with backlight
Refresh time	1 s
Backlight activation time	10 s
Active energy: 1 display, 7-digit	000000.0 - 999999.9 kWh
Reactive energy: 1 display, 7-digit	000000.0 - 999999.9 kvarh
Apparent energy: 1 display, 7-digit	000000.0 - 999999.9 kVAh
Realtime active power: 1 display, 4-digit	00.00 - 99.99 kW
Realtime reactive power: 1 display, 4-digit	00.00 - 99.99 kvar
Realtime voltage: 1 display, 4-digit	000.0 ... 999.9 V
Realtime current: 1 display, 4-digit	00.00 ... 99.99 A
Power factor: 1 display, 4-digit	0.001-1.000
Frequency: 1 display, 4-digit	45.00-65.00 Hz
<b>COMMUNICATION</b>	
Ethernet	Full duplex
Protocol	Modbus TCP, HTTP, NTP, DHCP
Baudrate	10/100 Mbps
Web server password	Username: admin / password: Admin Username: user / password: user
Default IP address	192.168.0.4
Default Gateway IP address	192.168.0.1
Default netmask	255.255.255.000
Default slave address	5
<b>SAVING</b>	
Energy registers	In FRAM memory
<b>ENVIRONMENTAL CONDITIONS</b>	
Mechanical environment	M1
Electromagnetic environment	E2
Operating temperature range	-25°C to +55°C
Storage temperature	-25°C to 75°C
Humidity	≤ 80%
Installation	Internal (box/cabinet)
Vibrations	±0.075 mm

HOUSING	
Dimensions W x H x D (mm)	Modular - width of 2 modules (DIN 43880) 36 x 90 x 64
Installation	On DIN rail (EN 60715)
Connection capacity, tightening torque	See chapter "6. Connection", page 10
Protection index	Front: IP51 - casing: IP20
Insulation class	Class II (EN 50470-1)
Weight	215 g

## 14. GLOSSARY OF ABBREVIATIONS

info	Menu information
Fr1	Metrological firmware version
Fr2	Non-metrological firmware version
CS1.	Checksum of metrological firmware
CS2.	Checksum of non-metrological firmware
tAr.	Tariff menu
tot	Total menu
P. rt	Partial and realtime readings menu
SEtuP.	Setup menu
rES ALL	Reset partial energy
SAVE?	Confirm selection
Y	Save and exit
N	Exit without saving
C	Continue without saving
EthSEF	Default settings
IP1	IP address 1
IP2	IP address 2
IP3	IP address 3
IP4	IP address 4
nET1	Netmask 1
nET2	Netmask 2
nET3	Netmask 3
nET4	Netmask 4
GAt1	Gateway 1
GAt2	Gateway 2
GAt3	Gateway 3
GAt4	Gateway 4

---

CORPORATE HQ CONTACT:  
SOCOMECSAS  
1-4 RUE DE WESTHOUSE  
67235 BENFELD, FRANCE

---

[www.socomec.com](http://www.socomec.com)

