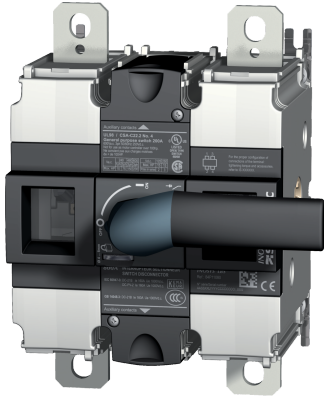


86P11064

DC LOAD BREAK SWITCH INOSYS LBS MANUEL IEC 630A 1+1P 1500VDC F3



Strong points

- High performance power switching in a compact frame
- Safe and reliable operation
- Designed for harsh environments
- Easy to install
- Modular solution for flexible configuration

General characteristics

- Range 160 A to 1600 A.
- Up to 2000 VDC.
- High-performance switching with a compact design.
- Easy integration.
- Reinforced safety with visible breaking indication.
- High efficiency with low power loss.

Compliance with standards

- IEC 60947-3
- DC-21B & DC-PV2
- CCC

Access to resources (ex: manuals)

<https://www.socomec.co.uk/en-gb/reference/86P11064>

INOSYS is a range of load break switches that can be controlled manually, by using the handle to disconnect all or part of the electrical installation. They ensure on-load opening / closing and safe disconnection of any direct current low voltage electrical circuit up to 2000 VDC. They can also be used for emergency power switching applications. They are the first switches on the market capable of handling 2000 VDC.

Classification	
UNSPSC	39122233
ETIM Class	EC000216
IGCC	5290
Commerce	
Effective date	2018-08-01
Country of origin	TN
Length of the product unit	0.2
Width of the product unit	0.137
Depth of the product unit	0.11
ETIM - Electrical characteristics	
Max. rated operation voltage Ue AC [V]	1500
Rated operating voltage [V]	600..1500
Rated permanent current Iu [A]	630
Rated short-time withstand current Icw [kA]	8
Number of poles	2
ETIM - Mechanical characteristics	
Suitable for floor mounting	No
Suitable for front mounting 4-hole	Yes
Suitable for front mounting centre	No
Suitable for distribution board installation	Yes
Suitable for intermediate mounting	Yes
Colour control element	Other
Degree of protection (IP), front side	IP20
ETIM - Technical features	
Version as main switch	Yes
Version as maintenance-/service switch	Yes
Version as safety switch	Yes
Version as emergency stop installation	Yes
Version as reversing switch	No
Number of switches	1
Motor drive optional	No
Motor drive integrated	No
Voltage release optional	No
Device construction	Built-in device fixed built-in technique
Type of control element	Other
Interlockable	Yes
Type of electrical connection of main circuit	Bolt connection
Logistics	
GTIN/EAN	3596033028175

Customs number	8535301090
Price unit	PC
Weight of the packing unit	3.6
Length of the packing unit	0.22
Width of the packing unit	0.38
Depth of the packing unit	0.16

Norms

Conformity to standards	CCC IEC
-------------------------	-------------

Technical Characteristics

Control operator	Direct : E3 / External : S2L
Number of poles	1+1
Rated voltage	1500
Rated current	630
Type	Frontal or lateral operation
Frame size	F3