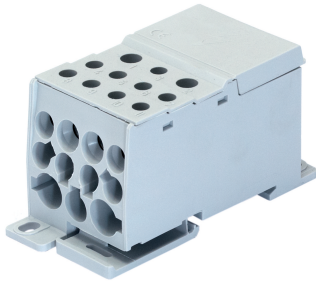


54111012

DISTRIBUTION BLOCK UNIPOLAR 125 A IEC AND 115 A UR



Strong points

- Extensive range
- IEC and UL range
- Easy integration

General characteristics

IEC/UL distributors:

- Material: tin-plated aluminium.
- For conductors: aluminium or copper.
- IP20 connection.
- L1, L2, L3, N marking adjusted by Allen key.
- DIN rail-mounted.
- DIN rail attachment clip.
- Board-mounted.
- Assembly clip for multiple distribution blocks.

IEC/UR distributors:

- Material: treated aluminium for types 1 to 5, uncoated brass for types 6 to 8.
- For conductors: Aluminium or copper for types 1 to 5, copper for types 6 to 8.
- IP20 connection.
- DIN rail-mounted.
- Board-mounted.

Compliance with standards

- IEC 61439-1
- IEC 60947-7-1
- UL 1953
- UL 1059

Access to resources (ex: manuals)

<https://www.socomec.co.uk/en-gb/reference/54111012>

Distributors provide an easy connection to conductors. They are mounted downstream of a load break switch, changeover switch, a fuse switch or any protection device on the market.

Classification	
UNSPSC	39121421
ETIM Class	EC000276
IGCC	4586
Commerce	
Effective date	2018-03-06
Country of origin	FR
Length of the product unit	0.027
Width of the product unit	0.074
Depth of the product unit	0.046
Weight	0.095
ETIM - Mechanical characteristics	
Number of poles	1
With seal head	No
Logistics	
GTIN/EAN	3596033047565
Customs number	8536901000
Price unit	PC
Weight of the packing unit	0.076
Length of the packing unit	0.035
Width of the packing unit	0.08
Depth of the packing unit	0.055
Norms	
Conformity to standards	IEC UL
Technical Characteristics	
Number of conductors	8
Number of poles	1
Rated current	125..115