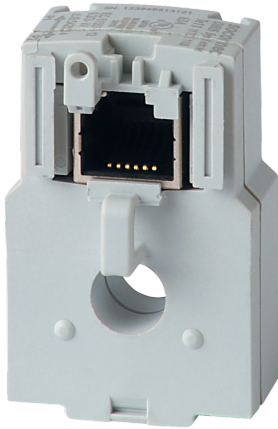


48290501

Solid current sensor TE-18 18mm 25-63A



Strong points

- Plug & Play
- Accuracy as per standard IEC 61557-12
- Installation

General characteristics

- Range from 5 to 2000A.
- used with DIRIS Digiware, DIRIS A-40 and DIRIS B.

Compliance with standards

- IEC 61557-12
- ISO 14025
- UL

Access to resources (ex: manuals)

<https://www.socomec.co.uk/en->

[gb/reference/48290501](https://www.socomec.co.uk/en-gb/reference/48290501)

TE smart current sensors measure the load currents of an electrical system and send the data to meters and measurement hubs via an RJ12 plug-and-play output. Thanks to a wide measurement range, TE current sensors cover the full current range of 5 to 2000 A, with 7 references. TE solid current sensors can be connected to DIRIS Digiware, DIRIS A-40 and DIRIS B via a rapid RJ12 connection. Numerous accessories are available to aid the installation of sensors in any type of cabinet.

Classification	
UNSPSC	83101808
ETIM Class	EC002048
IGCC	6042
Commerce	
Effective date	2013-11-22
Country of origin	FR
ETIM - Electrical characteristics	
Rated primary current [A]	63
Rated secondary current [A]	0.1
Rated secondary apparent power [VA]	0.1
Accuracy class	0.2S
Overcurrent limiting factor	FS 10
Calibrated	Yes
ETIM - Mechanical characteristics	
With contact protection	Yes
Height opening [mm]	8.6..8.6
Width opening [mm]	8.6..8.6
Opening diameter [mm]	8.6
Snap mounting	Yes
With copper rail	Yes
Secondary connection	Plug-in connection
ETIM - Technical features	
Model	Through-feed current converter
Number of primary inputs	1
Logistics	
GTIN/EAN	3596032776473
Customs number	8504312990
Price unit	PC
Weight of the packing unit	0.03
Length of the packing unit	0.015
Width of the packing unit	0.11
Depth of the packing unit	0.13
Norms	
Conformity to standards	IEC UL
Technical Characteristics	
Model	TE
Opening	Diam.8,6
Rated current	63
Secondary rated current	RJ12