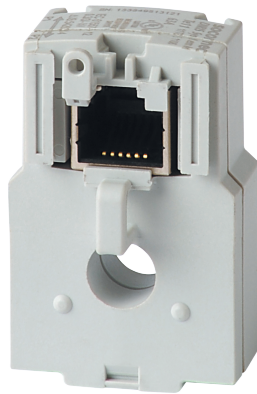


48290500

Measurement Sensor TE Current Sensor Solid core 20A class 0.2S



TE smart current sensors measure the load currents of an electrical system and send the data to meters and PMDs via an RJ12 plug-and-play output. Thanks to a wide measurement range, TE current sensors cover the full current range of 5 to 2000 A, with 7 references. TE solid-core current sensors can be connected to DIRIS Digiware, DIRIS A-40, DIRIS B and ISOM Digiware F-60 via a quick RJ12 connection. Numerous accessories are available to aid the installation of sensors in any type of cabinet.

Strong points

- Plug & Play
- Accuracy according to IEC 61557-12
- Installation

General characteristics

- Range 5 to 2000 A.
- Used with DIRIS Digiware I, DIRIS A-40, DIRIS B and ISOM Digiware F-60.

Compliance with standards

- IEC 61557-12
- ISO 14025
- UL

Access to resources (ex: manuals)



<https://www.socomec.co.uk/en-gb/reference/48290500>

Technical Characteristics

Model	TE
Opening	Diam.8,6
Rated current [A]	20
Secondary rated current	RJ12
Function	Current measurement
Type of current	AC
Type of product	Solid core
Internal diameter	9
Secondary Output	Voltage
Accuracy class	0.5
Type of connection	RJ12
Conformity to standards	IEC 61557-12 UL 61010
Customisable	No

Classification

UNSPSC	83101808
ETIM Class	EC002048
IGCC	6042

Commerce

Description	Solid-core current TE-18 primary 20A/secondary RJ12A class 0.5, these sensors measure the load currents of an electrical system and send the data to meters and measurement
Effective date	2013-11-22
Offer Life Cycle Code	40
Country of origin	FR

ETIM - Electrical characteristics

Rated primary current [A]	20
Rated secondary current [A]	0.1
Rated secondary apparent power [VA]	0.1
Accuracy class	0.2S
Overcurrent limiting factor	FS 10
Calibrated	Yes

ETIM - Mechanical characteristics

With contact protection	Yes
Height opening [mm]	8.6..8.6
Width opening [mm]	8.6..8.6
Opening diameter [mm]	8.6
Snap mounting	Yes
With copper rail	Yes

Secondary connection	Plug-in connection
ETIM - Technical features	
Model	Through-feed current converter
Number of primary inputs	1
Logistics	
GTIN/EAN	3596032776466
Customs number	8504312990
Price unit	PC
Weight of the packing unit [kg]	0.03
Length of the packing unit [m]	0.02
Width of the packing unit [m]	0.11
Depth of the packing unit [m]	0.13
Norms	
Conformity to standards	IEC UL