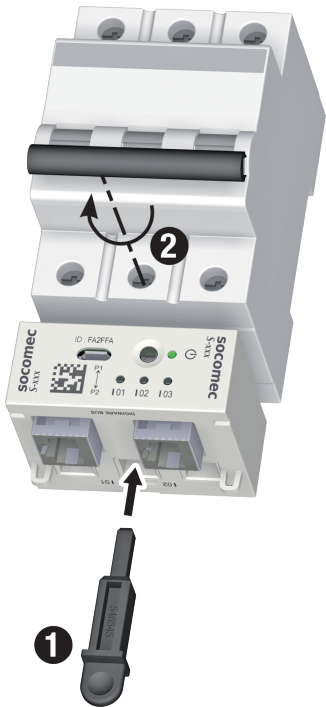


48290196

Temporary MCB insert (x10) for DIRIS Digiware S



Accessories for mounting DIRIS Digiware S on DIN rail and circuit breaker.

Classification

| | |
|------------|----------|
| UNSPSC | 83101808 |
| ETIM Class | EC002295 |
| IGCC | 6042 |

Commerce

| | |
|-------------------|------------|
| Effective date | 2018-02-01 |
| Country of origin | FR |

ETIM - Technical features

| | |
|------------------------------|---------------------------|
| Type of accessory/spare part | Installation mounting set |
|------------------------------|---------------------------|

Logistics

| | |
|----------------------------|---------------|
| GTIN/EAN | 3596033021619 |
| Customs number | 8504901700 |
| Price unit | PC |
| Weight of the packing unit | 0.01 |
| Length of the packing unit | 0.005 |
| Width of the packing unit | 0.005 |
| Depth of the packing unit | 0.05 |

Technical Characteristics

| | |
|------|---|
| Type | Temporary MCB insert (x10) for DIRIS Digiware S |
|------|---|

General characteristics

- DIN rail and back plate mounting clip.
- Temporary MCB insert.

Access to resources (ex: manuals)

<https://www.socomec.co.uk/en-gb/reference/48290196>