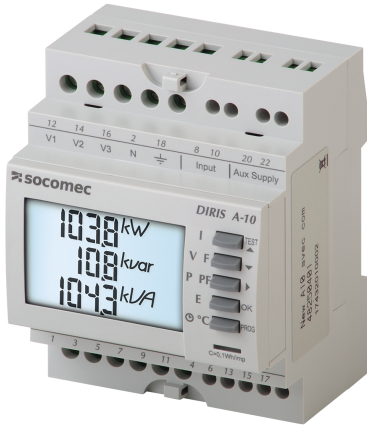


48250400

Energy Meter Modular multifunction meter DIRIS A-10



The DIRIS A-10 is a multi-measurement device for measuring electrical values in LV networks in modular format with connection to current transformers.

It enables viewing of all electrical parameters and operation of measurement, metering and communication functions.

Strong points

- Easy to use
- Built-in temperature probe
- Detects wiring errors
- Conformity to with IEC 61557-12

Compliance with standards

- IEC 61557-12
- IEC 62053-22 Class 0.5 S
- IEC 62053-23 Class 2
- UL

Access to resources (ex: manuals)



<https://www.socomec.co.uk/en-gb/reference/48250400>

Technical Characteristics

Application	Monitoring
Communication ports	None
Communication protocols	None
Model	A10

Classification

UNSPSC	83101808
ETIM Class	EC002301
IGCC	6042

Commerce

Description	DIRIS A-10 without RS485 Modbus communication It allows all electrical parameters to be displayed and utilised for communication and/or output functions
Effective date	2017-05-15
Offer Life Cycle Code	40
Country of origin	FR

ETIM - Electrical characteristics

Accuracy class active energy according to IEC 62053-22	0.25
Accuracy class reactive energy according to IEC 62053-23	Other
Sampling frequency [Hz]	65
Number of voltage measurement inputs	3
Number of current measurement inputs	3
Voltage type (supply voltage)	AC
Supply voltage AC 50 Hz [V]	110..277
Supply voltage AC 60 Hz [V]	110..277
Measuring range for frequency [Hz]	45..65

ETIM - Technical features

Ampere meter	Yes
Blind power meter	Yes
With rotational speed meter	No
Frequency meter	Yes
Pulse counter	Yes
Voltmeter	Yes
Effective power measurement device	Yes
Display	LCD
Remote display	No

Logistics

GTIN/EAN	3596033014796
Customs number	9030310090
Price unit	PC

Weight of the packing unit [kg]	0.298
Length of the packing unit [m]	0.135
Width of the packing unit [m]	0.095
Depth of the packing unit [m]	0.107
Norms	
Conformity to standards	IEC UL