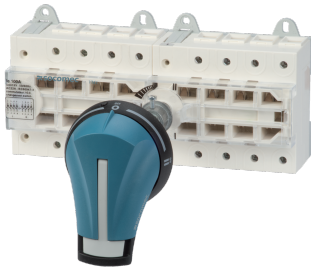


44304010

Manual operated transfer switch body SIRCO VM1 I-0-II 4P 100A



Strong points

- Safe isolation
- Modular product

General characteristics

- Range from 63A to 125A.
- Available in 3P or 4P.
- Direct handle or external handle.

Compliance with standards

- IEC 60947-3

Access to resources (ex: manuals)

<https://www.socomec.co.uk/en-gb/reference/44304010>

SIRCO VM1 are 3 or 4 pole modular manual transfer switches with visible breaking. They provide on-load transfer between two sources for any low voltage power circuit, as well as safety isolation. Other applications include source inversion (e.g. to change the direction of a motor) or grounding/earthing.

Classification

| | |
|------------|----------|
| UNSPSC | 39122205 |
| ETIM Class | EC000216 |
| IGCC | 5177 |

Commerce

| | |
|----------------------------|------------|
| Effective date | 1999-12-01 |
| Country of origin | TN |
| Length of the product unit | 0.1155 |
| Width of the product unit | 0.215 |
| Depth of the product unit | 0.0905 |
| Weight | 1.36 |

ETIM - Electrical characteristics

| | |
|---|----------|
| Max. rated operation voltage Ue AC [V] | 800 |
| Rated operating voltage [V] | 400..690 |
| Rated permanent current Iu [A] | 100 |
| Rated permanent current at AC-23, 400 V [A] | 63 |
| Rated permanent current at AC-21, 400 V [A] | 100 |
| Rated operation power at AC-23, 400 V [kW] | 30 |
| Switching power at 400 V [kW] | 30 |
| Conditioned rated short-circuit current Iq [kA] | 100 |
| Number of poles | 4 |

ETIM - Mechanical characteristics

| | |
|--|-------|
| Suitable for floor mounting | No |
| Suitable for front mounting 4-hole | No |
| Suitable for front mounting centre | No |
| Suitable for distribution board installation | No |
| Suitable for intermediate mounting | Yes |
| Colour control element | Black |
| Degree of protection (IP), front side | IP20 |

ETIM - Technical features

| | |
|---|--|
| Version as main switch | Yes |
| Version as maintenance-/service switch | Yes |
| Version as safety switch | Yes |
| Version as emergency stop installation | No |
| Version as reversing switch | Yes |
| Number of switches | 2 |
| Motor drive optional | No |
| Motor drive integrated | No |
| Voltage release optional | No |
| Device construction | Built-in device fixed built-in technique |
| Type of control element | Short thumb-grip |
| Interlockable | Yes |
| Type of electrical connection of main circuit | Cable clamp |

Logistics

| | |
|----------------------------------|------------------------------------|
| GTIN/EAN | 3596031221417 |
| Customs number | 8536508090 |
| Price unit | PC |
| Weight of the packing unit | 1.36 |
| Length of the packing unit | 0.255 |
| Width of the packing unit | 0.12 |
| Depth of the packing unit | 0.15 |
| Norms | |
| Conformity to standards | IEC |
| Technical Characteristics | |
| Control operator | Manual Direct : E1 / External : S1 |
| Number of poles | 4 |
| Rated current | 100 |
| Frame size | VM1 |