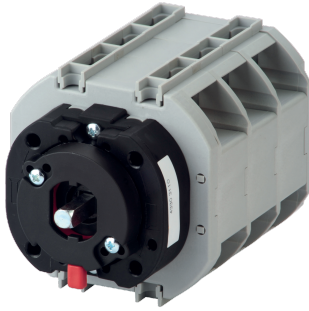


43303106

## COMO CS switch body, I-0-II function, 3P, door mounting, 63A



### Strong points

- Simple installation
- Quick mounting
- Effective in all circumstances

### General characteristics

- Range from 25A to 100A.
- Available in 3P or 4P.
- Rear mounting or door mounting.
- Available as stand-alone switches or enclosed.

### Compliance with standards

- IEC 60947-3
- UL 60947-4-1

### Access to resources (ex: manuals)

<https://www.socomec.co.uk/en-gb/reference/43303106>

They ensure switching, transfer of sources or transfer of two low voltage circuits on load as well as their safe disconnection.

### Classification

UNSPSC	39122205
ETIM Class	EC000216
IGCC	5177

### Commerce

Effective date	2018-09-18
Country of origin	DE
Length of the product unit	0.074
Width of the product unit	0.113
Depth of the product unit	0.071

### ETIM - Electrical characteristics

Max. rated operation voltage Ue AC [V]	690
Rated operating voltage [V]	400..690
Rated permanent current Iu [A]	63
Rated permanent current at AC-23, 400 V [A]	63
Rated permanent current at AC-21, 400 V [A]	63
Rated operation power at AC-23, 400 V [kW]	37
Switching power at 400 V [kW]	37
Conditioned rated short-circuit current Iq [kA]	5
Number of poles	3

### ETIM - Mechanical characteristics

Suitable for floor mounting	No
Suitable for front mounting 4-hole	Yes
Suitable for front mounting centre	Yes
Suitable for distribution board installation	No
Suitable for intermediate mounting	No
Colour control element	Black
Degree of protection (IP), front side	IP20

### ETIM - Technical features

Version as main switch	Yes
Version as maintenance-/service switch	Yes
Version as safety switch	Yes
Version as emergency stop installation	No
Version as reversing switch	Yes
Number of switches	1
Motor drive optional	No
Motor drive integrated	No
Voltage release optional	No
Device construction	Built-in device fixed built-in technique
Type of control element	Short thumb-grip
Interlockable	Yes
Type of electrical connection of main circuit	Cable clamp

### Logistics

GTIN/EAN	3596033033520
Customs number	8536508090

Price unit	PC
Weight of the packing unit	0.455
Length of the packing unit	0.12
Width of the packing unit	0.13
Depth of the packing unit	0.095
<b>Norms</b>	
Conformity to standards	IEC UL
<b>Technical Characteristics</b>	
Control operator	Direct / External : L
Number of poles	3
Rated current	63
Type	door mounting
Frame size	CSd