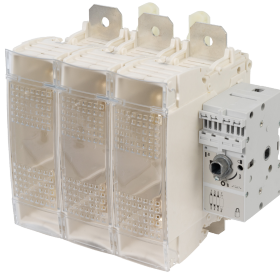


38313038

Switch-discon-fuse FUSERBLOC-Ext&Dir F/L R OP-400A-3P-DIN-Fuse S2



Strong points

- Improved safety
- High breaking capacity
- Multi-use
- Specific functionalities for simplified use

General characteristics

- 25 to 1250 A.
- Up to 690 VAC.
- Up to 100 kA.
- Available in 2P, 3P or 4P, from 25 to 1250 A.

Compliance with standards

- IEC 60947-3
- IEC 60269-1
- IEC 60269-2

Access to resources (ex: manuals)

<https://www.socomec.co.uk/en-gb/reference/38313038>

Front/side control FUSERBLOCs are manually operated multipolar fuse load break switches.

They make and break on load and provide safety isolation and protection against overcurrent for any low voltage electrical circuit.

This range includes both direct and external-control models, with 2, 3 and 4 poles and from 25 to 1250 A.

Classification

| | |
|------------|----------|
| UNSPSC | 39122233 |
| ETIM Class | EC001040 |
| IGCC | 5291 |

Commerce

| | |
|----------------------------|------------|
| Effective date | 2008-06-26 |
| Country of origin | FR |
| Length of the product unit | 0.205 |
| Width of the product unit | 0.526 |
| Depth of the product unit | 0.149 |
| Weight | 6.25 |

ETIM - Electrical characteristics

| | |
|---|-----|
| Max. rated operation voltage Ue AC [V] | 690 |
| Rated permanent current Iu [A] | 400 |
| Rated operation power at AC-23, 400 V [kW] | 220 |
| Conditioned rated short-circuit current Iq [kA] | 50 |
| Number of poles | 3 |

ETIM - Mechanical characteristics

| | |
|---------------------------------------|------------|
| Cable entry | Top/bottom |
| Equipped with connectors | No |
| Suitable for floor mounting | Yes |
| Suitable for front mounting | Yes |
| Suitable for busbar mounting | No |
| Degree of protection (IP), front side | IP20 |

ETIM - Technical features

| | |
|---|---------------------|
| Version as main switch | Yes |
| Version as safety switch | Yes |
| Suitable for fuses | Other |
| With error protection | No |
| Type of electrical connection of main circuit | Bolt connection |
| Type of control element | Long turning handle |
| Position control element | Front side |
| Motor drive optional | No |
| Motor drive integrated | No |
| Version as emergency stop installation | Yes |

Logistics

| | |
|----------------------------|---------------|
| GTIN/EAN | 3596031927272 |
| Customs number | 8536309090 |
| Price unit | PC |
| Weight of the packing unit | 6.25 |
| Length of the packing unit | 0.31 |
| Width of the packing unit | 0.403 |

| | |
|----------------------------------|------------------------------|
| Depth of the packing unit | 0.48 |
| Norms | |
| Conformity to standards | IEC UL |
| Technical Characteristics | |
| Control operator | Direct : H12 / External : S2 |
| Fuse size | NH2 |
| Number of poles | 3 |
| Rated current | 400 |
| Type | I-O-Test |
| Frame size | 16 |