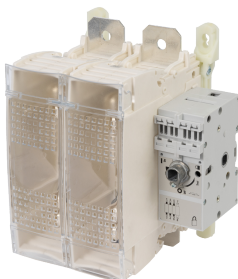


38312038

Switch-discon-fuse FUSERBLOC-Ext&Dir F/L R OP-400A-2P-DIN-Fuse S2



Strong points

- Improved safety
- High breaking capacity
- Multi-use
- Specific functionalities for simplified use

General characteristics

- 25 to 1250 A.
- Up to 690 VAC.
- Up to 100 kA.
- Available in 2P, 3P or 4P, from 25 to 1250 A.

Compliance with standards

- IEC 60947-3
- IEC 60269-1
- IEC 60269-2

Access to resources (ex: manuals)

<https://www.socomec.co.uk/en-gb/reference/38312038>

Front/side control FUSERBLOCs are manually operated multipolar fuse load break switches.

They make and break on load and provide safety isolation and protection against overcurrent for any low voltage electrical circuit.

This range includes both direct and external-control models, with 2, 3 and 4 poles and from 25 to 1250 A.

Classification

UNSPSC	39122233
ETIM Class	EC001040
IGCC	5291

Commerce

Effective date	2008-06-26
Country of origin	FR
Length of the product unit	0.205
Depth of the product unit	0.149
Weight	5.89

ETIM - Electrical characteristics

Max. rated operation voltage Ue AC [V]	690
Rated permanent current Iu [A]	400
Rated operation power at AC-23, 400 V [kW]	220
Conditioned rated short-circuit current Iq [kA]	50
Number of poles	2

ETIM - Mechanical characteristics

Cable entry	Top/bottom
Equipped with connectors	No
Suitable for floor mounting	Yes
Suitable for front mounting	Yes
Suitable for busbar mounting	No
Degree of protection (IP), front side	IP20

ETIM - Technical features

Version as main switch	Yes
Version as safety switch	Yes
Suitable for fuses	NH2
With error protection	No
Type of electrical connection of main circuit	Bolt connection
Type of control element	Long turning handle
Position control element	Front side
Motor drive optional	No
Motor drive integrated	No
Version as emergency stop installation	Yes

Logistics

GTIN/EAN	3596031927265
Customs number	8536309090
Price unit	PC
Weight of the packing unit	5.819
Length of the packing unit	0.305
Width of the packing unit	0.4
Depth of the packing unit	0.475

Norms

Conformity to standards	IEC UL
-------------------------	------------

Technical Characteristics

Control operator	Direct : H12 / External : S2
Fuse size	NH2
Number of poles	2
Rated current	400
Type	I-0-Test
Frame size	16