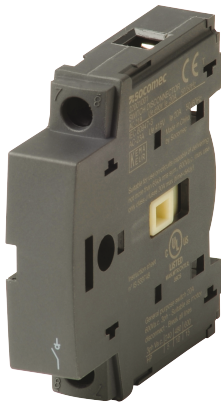


22001001

Switched fourth pole module for SIRCO M range 20A



Adds one or two poles to your SIRCO M and transforms:

- A 3-pole into a 4-pole load break switch.
- A 6-pole into a 8-pole load break switch.
- A 3-pole into a 4-pole changeover switch.

Access to resources (ex: manuals)



<https://www.socomec.co.uk/en-gb/reference/22001001>

Technical Characteristics

| | |
|--------------------------|---------------------|
| Height [mm] | 68 |
| Width [mm] | 15 |
| Depth [mm] | 50 |
| Weight [kg] | 0.07 |
| Number of poles | 1 |
| Rated current [A] | 20 |
| Type | Switched power pole |
| Suitable with frame size | M1 |

Classification

| | |
|------------|----------|
| UNSPSC | 39122233 |
| ETIM Class | EC002498 |
| IGCC | 5290 |

Commerce

| | |
|-----------------------|------------|
| Effective date | 2006-04-13 |
| Offer Life Cycle Code | 40 |
| Country of origin | CN |

ETIM - Technical features

| | |
|------------------------------|----------|
| Type of accessory/spare part | 4th pole |
| Accessory | Yes |
| Spare part | No |

Logistics

| | |
|---------------------------------|---------------|
| GTIN/EAN | 3596031825738 |
| Customs number | 8538909999 |
| Price unit | PC |
| Weight of the packing unit [kg] | 0.07 |
| Length of the packing unit [m] | 0.085 |
| Width of the packing unit [m] | 0.08 |
| Depth of the packing unit [m] | 0.03 |