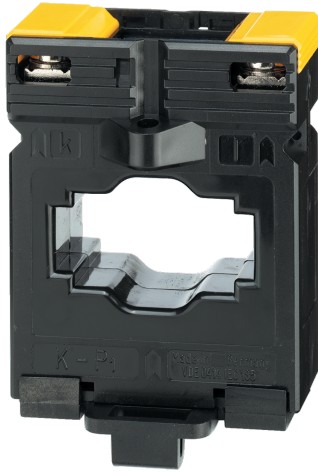


192T3275

Bar or cable-through CT TCB 26-40 750A/5A Class 1 10VA



Strong points

- Compatible accuracy class
- Wide range of ratings and dimensions
- Quick and easy to install

General characteristics

- Accuracy class: 0.2s — 0.5 or 1.
- Dielectric quality: 3 kV — 50 Hz — 1 min.
- Operating frequency: 50 — 60 Hz.
- Permanent overload: 1.2 In.
- Insulation class: E (120 °C).

Compliance with standards

- IEC 61869-2
- IEC 61439-1

Access to resources (ex: manuals)

<https://www.socomec.co.uk/en->

[gb/reference/192T3275](https://www.socomec.co.uk/en-gb/reference/192t3275)

Current transformers deliver to the secondary a standard current proportional to the primary current and adapted to the rating of the associated device. They are equipped as standard with removable terminal covers and double terminals allowing the secondary to be short-circuited without any risk.

They are mounted using two screw-on metal brackets or, in certain cases, by a clip-on DINrail fastener. The connections are made by screws or by fast-on terminals.

Classification

UNSPSC	39121032
ETIM Class	EC002048
IGCC	4186

Commerce

Effective date	1998-02-09
Country of origin	DE

ETIM - Electrical characteristics

Rated primary current [A]	750
Rated secondary current [A]	5
Rated secondary apparent power [VA]	10
Accuracy class	1
Overcurrent limiting factor	FS 5
Calibrated	No

ETIM - Mechanical characteristics

Height opening [mm]	40..40
Width opening [mm]	40..40
Opening diameter [mm]	26
Snap mounting	Yes
With copper rail	Yes
Secondary connection	Screw connection

ETIM - Technical features

Model	Through-feed current converter
Number of primary inputs	1

Logistics

GTIN/EAN	3596031091546
Customs number	8504318090
Price unit	PC
Weight of the packing unit	0.284
Length of the packing unit	0.1
Width of the packing unit	0.065
Depth of the packing unit	0.055

Norms

Conformity to standards	IEC
-------------------------	-----

Technical Characteristics

Model	TCB 26-40
Opening	40x12 - Diam.26
Rated current	750
Secondary rated current	5