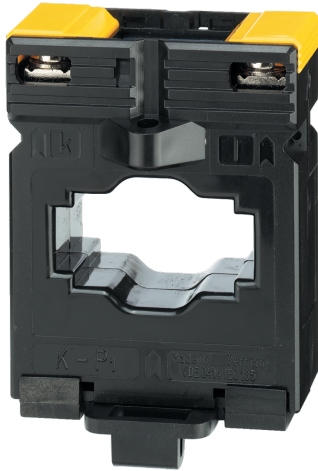


192T3260

Bar or cable-through CT TCB 26-40 600A/5A Class 1 5VA



Strong points

- Compatible accuracy class
- Wide range of ratings and dimensions
- Quick and easy to install

General characteristics

- Accuracy class: 0.2s — 0.5 or 1.
- Dielectric quality: 3 kV — 50 Hz — 1 min.
- Operating frequency: 50 — 60 Hz.
- Permanent overload: 1.2 In.
- Insulation class: E (120 °C).

Compliance with standards

- IEC 61869-2
- IEC 61439-1

Access to resources (ex: manuals)

<https://www.socomec.co.uk/en->

[gb/reference/192T3260](https://www.socomec.co.uk/en-gb/reference/192t3260)

Current transformers deliver to the secondary a standard current proportional to the primary current and adapted to the rating of the associated device. They are equipped as standard with removable terminal covers and double terminals allowing the secondary to be short-circuited without any risk.

They are mounted using two screw-on metal brackets or, in certain cases, by a clip-on DINrail fastener. The connections are made by screws or by fast-on terminals.

Classification	
UNSPSC	39121032
ETIM Class	EC002048
IGCC	4186
Commerce	
Effective date	1998-02-09
Country of origin	DE
ETIM - Electrical characteristics	
Rated primary current [A]	600
Rated secondary current [A]	5
Rated secondary apparent power [VA]	5
Accuracy class	1
Overcurrent limiting factor	FS 5
Calibrated	No
ETIM - Mechanical characteristics	
With contact protection	No
Height opening [mm]	40..40
Width opening [mm]	40..40
Opening diameter [mm]	26
Snap mounting	Yes
With copper rail	Yes
Secondary connection	Screw connection
ETIM - Technical features	
Model	Through-feed current converter
Number of primary inputs	1
Logistics	
GTIN/EAN	3596031091539
Customs number	8504318090
Price unit	PC
Weight of the packing unit	0.233
Length of the packing unit	0.065
Width of the packing unit	0.055
Depth of the packing unit	0.09
Norms	
Conformity to standards	IEC
Technical Characteristics	
Model	TCB 26-40
Opening	40x12 - Diam.26
Rated current	600
Secondary rated current	5