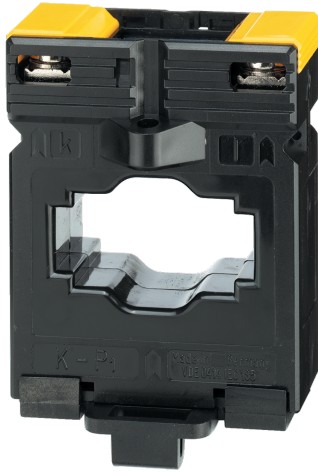


**192T3240**

## Bar or cable-through CT TCB 26-40 400A/5A Class 1 5VA



### Strong points

- Compatible accuracy class
- Wide range of ratings and dimensions
- Quick and easy to install

### General characteristics

- Accuracy class: 0.2s — 0.5 or 1.
- Dielectric quality: 3 kV — 50 Hz — 1 min.
- Operating frequency: 50 — 60 Hz.
- Permanent overload: 1.2 In.
- Insulation class: E (120 °C).

### Compliance with standards

- IEC 61869-2
- IEC 61439-1

### Access to resources (ex: manuals)

<https://www.socomec.co.uk/en->

[gb/reference/192T3240](https://www.socomec.co.uk/en-gb/reference/192t3240)

Current transformers deliver to the secondary a standard current proportional to the primary current and adapted to the rating of the associated device. They are equipped as standard with removable terminal covers and double terminals allowing the secondary to be short-circuited without any risk.

They are mounted using two screw-on metal brackets or, in certain cases, by a clip-on DINrail fastener. The connections are made by screws or by fast-on terminals.

<b>Classification</b>	
UNSPSC	39121032
ETIM Class	EC002048
IGCC	4186
<b>Commerce</b>	
Effective date	1998-02-09
Country of origin	DE
<b>ETIM - Electrical characteristics</b>	
Rated primary current [A]	400
Rated secondary current [A]	5
Rated secondary apparent power [VA]	5
Accuracy class	1
Overcurrent limiting factor	FS 5
Calibrated	No
<b>ETIM - Mechanical characteristics</b>	
With contact protection	No
Height opening [mm]	40..40
Width opening [mm]	40..40
Opening diameter [mm]	26
Snap mounting	Yes
With copper rail	No
Secondary connection	Screw connection
<b>ETIM - Technical features</b>	
Model	Through-feed current converter
Number of primary inputs	1
<b>Logistics</b>	
GTIN/EAN	3596031091515
Customs number	8504312990
Price unit	PC
Weight of the packing unit	0.27
Length of the packing unit	0.052
Width of the packing unit	0.065
Depth of the packing unit	0.095
<b>Norms</b>	
Conformity to standards	IEC
<b>Technical Characteristics</b>	
Model	TCB 26-40
Opening	40x12 - Diam.26
Rated current	400
Secondary rated current	5