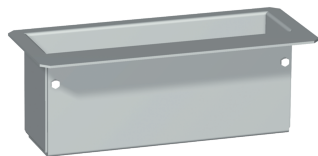


13099007

Extension unit 40-160A for ATyS M



Access to resources (ex: manuals)

<https://www.socomec.co.uk/en-gb/reference/13099007>

Dedicated to the installation of a three-phase ATyS M, it enables easy integration of a compact transfer switch solution.

Classification

| | |
|------------|----------|
| UNSPSC | 39122205 |
| ETIM Class | EC000261 |
| IGCC | 5177 |

Commerce

| | |
|-------------------|------------|
| Effective date | 2007-05-28 |
| Country of origin | FR |

ETIM - Mechanical characteristics

| | |
|-----------------------------|-----------|
| Width [mm] | 359 |
| Height [mm] | 128 |
| Depth [mm] | 94 |
| Material | Plastic |
| Material quality | Other |
| Surface finishing | Untreated |
| Colour | Grey |
| RAL-number | 7035 |
| With glazed door | No |
| With ventilation door | No |
| With rear door | No |
| Suitable for outdoor set-up | No |
| Pitched roof | No |

ETIM - Technical features

| | |
|---------------------------------|-----|
| Freestanding | No |
| Floor standing wall model | No |
| Suitable for wall mounting | Yes |
| Couplable | No |
| With mounting plate | No |
| Mounting plate depth-adjustable | No |
| Suitable for wall built-in | No |
| EMC-version | No |

Logistics

| | |
|----------------------------|---------------|
| GTIN/EAN | 3596031879038 |
| Customs number | 7616999099 |
| Price unit | PC |
| Weight of the packing unit | 1.42 |
| Length of the packing unit | 0.14 |
| Width of the packing unit | 0.17 |
| Depth of the packing unit | 0.32 |

Technical Characteristics

| | |
|--------|----------------|
| Height | 127.9 |
| Model | Extension unit |
| Width | 285 |