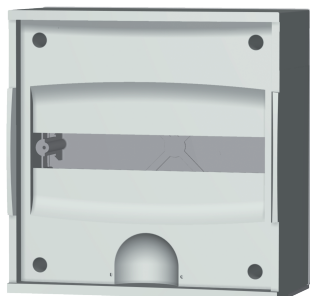


13099006

## Polycarbonate enclosure 385x385x193 40-160A for ATyS M



Dedicated to the installation of a three-phase ATyS M, it enables easy integration of a compact transfer switch solution.

Access to resources (ex: manuals)

<https://www.socomec.co.uk/en-gb/reference/13099006>

### Classification

UNSPSC	39122205
ETIM Class	EC000261
IGCC	5177

### Commerce

Effective date	2006-11-09
Country of origin	FR
Length of the product unit	0.385
Width of the product unit	0.385
Depth of the product unit	0.193
Weight	5.89

### ETIM - Mechanical characteristics

Width [mm]	385
Height [mm]	385
Depth [mm]	193
Material	Plastic
Material quality	Other
Surface finishing	Untreated
Colour	Grey
RAL-number	7035
With glazed door	No
With ventilation door	No
With rear door	No
Suitable for outdoor set-up	No
Pitched roof	No
Degree of protection (IP)	IP41

### ETIM - Technical features

Freestanding	Yes
Floor standing wall model	No
Suitable for wall mounting	Yes
Couplable	No
With mounting plate	Yes
Mounting plate depth-adjustable	No
Suitable for wall built-in	Yes
EMC-version	No

### Logistics

GTIN/EAN	3596031854561
Customs number	8538100000
Price unit	PC
Weight of the packing unit	5.89
Length of the packing unit	0.015
Width of the packing unit	0.115
Depth of the packing unit	0.2

### Technical Characteristics

Depth	193
-------	-----

Height	385
Model	Enclosure IP65
Width	385